



**Office of Homeland  
Security Statistics**

U.S. Department of Homeland Security

# Overview of Data Matching Methodology and Reporting in OHSS Enforcement Lifecycle Tool

*October 23, 2024*

*Hongwei Zhang*

# Agenda

- **How to Create OHSS Single Authoritative Persist Data?**
  - Data Matching Overview
  - Testing and Validation
- **How to Convert Persist Data into Enforcement Lifecycle and report it?**
  - **Enforcement Lifecycle Report on OHSS Web page**  
(<https://ohss.dhs.gov/topics/immigration/enforcements/enforcement-lifecycle>)
- **Dissemination plans**

## Data Matching Overview - Outcome

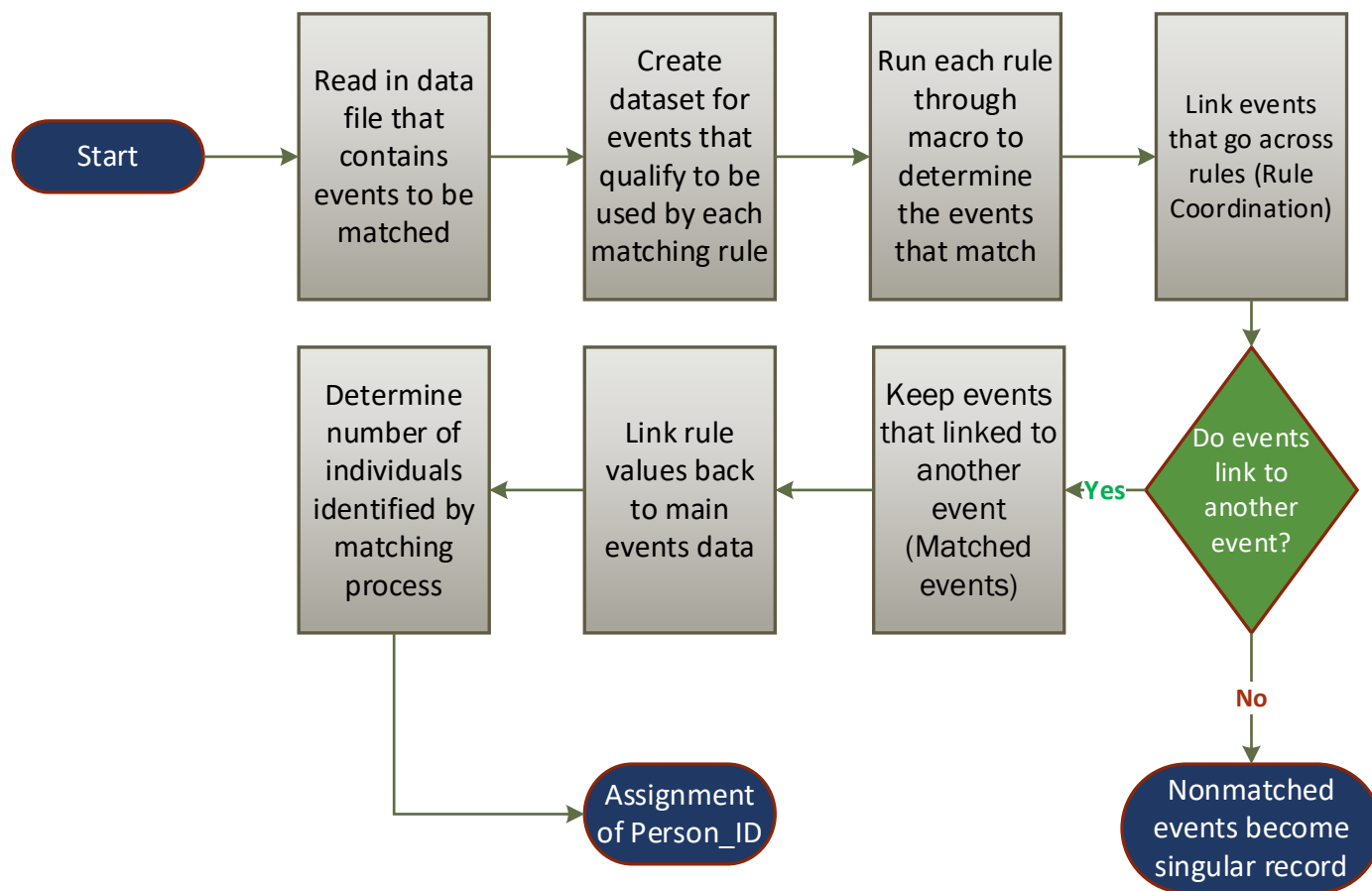
- **OHSS stacked 21 datasets matched by person identifiers to create the single authoritative Persist Dataset to support OHSS missions**
- **The OHSS Persist encompasses 41,583,998 unique individuals across 158,478,222 events covering fiscal years 2013 through 2024 Q3**
- **Use cases of Enforcement Lifecycle:**
  - Annual Enforcement Lifecycle Report
  - Input for the Encounter Projection Modeling (ETM) and other analytical work, including ER/CF process
  - Field congressional and WH inquiries, decision support, and inform policy

# Data Matching Overview - Data Sources

Agency	Datasets
<b>U.S. Citizenship and Immigration Services (USCIS)</b>	<ul style="list-style-type: none"> <li>– Affirmative Asylum (Global)</li> <li>– USCIS Asylum Pre-screening Office (Global)</li> <li>– Deferred Action for Childhood Arrivals (C3/ELIS)</li> <li>– Employment Authorization Documentation (C3/ELIS)</li> <li>– UCIS LPR (C3/ELIS)</li> </ul>
<b>Immigration and Customs Enforcement (ICE) Enforcement and Removal Operations (ERO)</b>	<ul style="list-style-type: none"> <li>– ERO Charging Documents Issued</li> <li>– ERO Administrative Arrests</li> <li>– ICE Initial Book-Ins</li> <li>– ICE Releases/Final Book-Outs</li> <li>– ICE Alternative to Detention</li> <li>– ICE Removals and Returns</li> </ul>
<b>ICE Homeland Security Investigations (HSI)</b>	<ul style="list-style-type: none"> <li>– HSI Administrative and Criminal Arrests</li> </ul>
<b>Customs and Border Protection (CBP) Office of Field Operations (OFO)</b>	<ul style="list-style-type: none"> <li>– OFO Inadmissibles</li> </ul>
<b>CBP U.S. Border Patrol (USBP)</b>	<ul style="list-style-type: none"> <li>– USBP Apprehensions</li> </ul>
<b>DHS</b>	<ul style="list-style-type: none"> <li>– Removals and Returns</li> </ul>
<b>DOJ Executive Office for Immigration Review (EOIR)</b>	<ul style="list-style-type: none"> <li>– EOIR Bonds</li> <li>– EOIR Schedule</li> <li>– EOIR Appeals</li> <li>– EOIR Proceedings</li> <li>– EOIR Case Information</li> <li>– EOIR Motions</li> </ul>

# Data Matching Overview - Workflow

Data is run through the new model matching workflow below to match persons and event-based records across datasets provided from each agency.



# Data Matching Overview - Numeric Variables Defined

Variables	Description	Level	Assessment
<b>Alien File Number</b>	Unique Identifier across DHS immigration components and EOIR	<b>Person</b>	<ul style="list-style-type: none"><li>– Very strong indicator</li><li>– Some individuals have multiple anumbers</li><li>– Missing or invalid (000000000) anumbers</li></ul>
<b>EID civ ID</b>	Identifier generated by the Enforcement Integrated Database	<b>Encounter</b>	<ul style="list-style-type: none"><li>– Used only by ICE and CBP</li><li>– Encounter level; cannot be used to match people across encounters</li><li>– Includes some missing values and errors</li></ul>
<b>Ident FIN</b>	Automated Biometric Identification System (ADIS) ID, generated from fingerprints	<b>Person</b>	<ul style="list-style-type: none"><li>– Very strong identifier</li><li>– OHSS does not receive Ident FINS for USCIS or EOIR data</li></ul>



# Data Matching Overview - Biographic Variables Defined

Variables	Common Errors
<b>Name</b>	<ul style="list-style-type: none"><li>– Different names included (first vs. first and middle)</li><li>– Multiple first, middle, or last names</li><li>– Different spellings, nicknames, typos</li><li>– Hyphens vs. spaces</li><li>– Common suffixes and prefixes (“de la”) may or may not be included</li><li>– Accented letters</li></ul>
<b>Birth Date</b>	<ul style="list-style-type: none"><li>– Month and day swapped</li><li>– January 1 is a common filler date</li><li>– Typos and errors</li></ul>
<b>Gender</b>	<ul style="list-style-type: none"><li>– Sometimes incorrect</li><li>– Sometimes unknown or missing in one dataset and M or F in another</li></ul>
<b>Citizenship</b>	<ul style="list-style-type: none"><li>– Sometimes incorrect</li><li>– Sometimes missing</li><li>– May vary between datasets; individual may have multiple citizenships, change citizenship, or lie</li></ul>

# Data Matching Overview- Hierarchy of Business Rules

The Matching Engine runs data through the following 7 business rules in sequential order. Each rule seeks to identify a match across a specific set of variables before moving to the next rule. If a match is identified, a PERSON\_ID is assigned to a person and their events. The matching process does not assign PERSON\_ID to singletons, which are non-matched events and considered a single event identity.

#	Business Rule	Description
1	Business Rule 1	Country, Gender and ANUM
2	Business Rule 2	ANUM, FIRST_NAME and LAST_NAME
3	Business Rule 3	ANUM and BIRTH_DT
4	Business Rule 4	IDENT_FINS and BIRTH_DT
5	Business Rule 5	BIRTH_DT and EID_CIV_ID
6	Business Rule 6	LAST_NAME, BIRTH_DT and ANUM
7	Business Rule 7	BIRTH_DT, FIRST_NAME and LAST_NAME





# Data Matching Overview- Business Rule Validation

As data is run through each rule, the following validation checkpoints are initiated. This is part of the Matching Engine's automated process and occurs prior to the official testing and validation process.

#	Business Rule	Description
1	<b>Fuzzy Matching</b>	A technique used in computer-assisted translation as a special case of record linkage. It works with matches that may be less than 100% perfect when finding correspondences between segments of a text and entries in a database of previous translations. In cases of slight spelling differences or typos, the Machine Engine uses the fuzzy matching technique of calculating the COMPGED score
2	<b>COMPGED score</b>	An algorithm that computes a "generalized edit distance" and summarizes the degree of difference between two (2) text strings or values thus calculating the score that reflects the difference
3	<b>Confidence Threshold</b>	Using the COMPGED score to compare the degree of difference.  <b>For example:</b> A perfect match has a COMPGED score of 0. Comparing a name such as "Jon" and "John" might give you a COMPGED score of 100. OHSS reviewed the non-matching events and noticed that name differences produced higher scores, so they then used the same rule with various scores to determine the correct threshold.



# Data Matching Overview- Example 1

	A	B	C	D	E	F	G	H	I	J	K	L	M	N	O	P	Q	R
1	seqn	country	source	gender	birth_dt	ANUM	IDENT_FIN	eid_civ_id	first_name	last_name	Rule11_N	Rule12_N	Rule16_N	Rule17_N	Rule20_N	Rule21_N	Rule22_N	Person_ID
2	207	Cuba	OFO	M	#####	#####			Anoydis	Mendoza Lopez	2132240579417	213224057A532M532412			M5324129417213224057	9417A532M532412	CubaM213224057	CubaM213224057
3	252172	Cuba	OFO	M	#####	#####	1284244313	1.83E+08	Anoydis	Mendoza Lopez	2132240579417	213224057A532M532412	12842443139417	9417183457353	M5324129417213224057	9417A532M532412	CubaM213224057	CubaM213224057
4	5314452	Cuba	OFO	M	#####	#####			Anoydis	Mendoza Lopez	2132240579417	213224057A532M532412			M5324129417213224057	9417A532M532412	CubaM213224057	CubaM213224057
5	5349608	Cuba	OFO	M	#####	#####	1284244313	1.83E+08	Anoydis	Mendoza Lopez	2132240579417	213224057A532M532412	12842443139417	9417183457353	M5324129417213224057	9417A532M532412	CubaM213224057	CubaM213224057
6	68565197	Cuba	EOIR	M	#####	#####					2132240579417						CubaM213224057	CubaM213224057
7	76707750	Cuba	EOIR	M	#####	#####					2132240579417						CubaM213224057	CubaM213224057
8	76707751	Cuba	EOIR	M	#####	#####					2132240579417						CubaM213224057	CubaM213224057
9	76707752	Cuba	EOIR	M	#####	#####					2132240579417						CubaM213224057	CubaM213224057
10	76707753	Cuba	EOIR	M	#####	#####					2132240579417						CubaM213224057	CubaM213224057
11	88117511	Cuba	EOIR	M	#####	#####					2132240579417						CubaM213224057	CubaM213224057
12	205	El Salvadc	OFO	M	#####	#####			Anderson Artun Aguilar Mendez		21317679118287	213176791A53625636A2465531			A246553218287213176791	18287A53625636A2465532	El SalvadorM213176791	El SalvadorM213176791
13	2515554	El Salvadc	USBP	M	#####	#####		1.83E+08	Anderson Artun Aguilar Mendez		21317679118287	213176791A53625636A2465531	18287183428689	A246553218287213176791	18287A53625636A2465532	El SalvadorM213176791	El SalvadorM213176791	
14	5314451	El Salvadc	OFO	M	#####	#####			Anderson Artun Aguilar Mendez		21317679118287	213176791A53625636A2465531			A246553218287213176791	18287A53625636A2465532	El SalvadorM213176791	El SalvadorM213176791
15	5794053	El Salvadc	USBP	M	#####	#####		1.83E+08	Anderson Artun Aguilar Mendez		21317679118287	213176791A53625636A2465531	18287183428689	A246553218287213176791	18287A53625636A2465532	El SalvadorM213176791	El SalvadorM213176791	
16	68562394	El Salvadc	EOIR	M	#####	#####					21317679118287						El SalvadorM213176791	El SalvadorM213176791
17	76705322	El Salvadc	EOIR	M	#####	#####					21317679118287						El SalvadorM213176791	El SalvadorM213176791
18	76705323	El Salvadc	EOIR	M	#####	#####					21317679118287						El SalvadorM213176791	El SalvadorM213176791
19	76705324	El Salvadc	EOIR	M	#####	#####					21317679118287						El SalvadorM213176791	El SalvadorM213176791
20	88114702	El Salvadc	EOIR	M	#####	#####					21317679118287						El SalvadorM213176791	El SalvadorM213176791
21	203	Honduras	OFO	F	#####	#####			Suany	Chirinos Mungui	20380530417819	203805304S5354C652552			C65255217819203805304	17819S5354C652552	HondurasF203805304	HondurasF203805304
22	4087117	Honduras	USBP	F	#####	#####		1.84E+08	Suany Daniela	Chirinos Mungui	20380530417819	203805304S5354C652552	17819183757140	C65255217819203805304	17819S5354C652552	HondurasF203805304	HondurasF203805304	
23	5314450	Honduras	OFO	F	#####	#####			Suany	Chirinos Mungui	20380530417819	203805304S5354C652552			C65255217819203805304	17819S5354C652552	HondurasF203805304	HondurasF203805304
24	6349347	Honduras	USBP	F	#####	#####		1.84E+08	Suany Daniela	Chirinos Mungui	20380530417819	203805304S5354C652552	17819183757140	C65255217819203805304	17819S5354C652552	HondurasF203805304	HondurasF203805304	
25	17553146	Honduras	ERO	F	#####	#####		1.84E+08	Suany	Chirinos Mungui	20380530417819	203805304S5354C652552	17819183757140	C65255217819203805304	17819S5354C652552	HondurasF203805304	HondurasF203805304	
26	68616750	Honduras	EOIR	F	#####	#####					20380530417819						HondurasF203805304	HondurasF203805304
27	83233618	Honduras	EOIR	F	#####	#####					20380530417819						HondurasF203805304	HondurasF203805304
28	86077705	Honduras	EOIR	F	#####	#####					20380530417819						HondurasF203805304	HondurasF203805304
29	88169215	Honduras	EOIR	F	#####	#####					20380530417819						HondurasF203805304	HondurasF203805304
30	201	Mexico	OFO	M	#####	#####			Apolinario	Basurto Montiel	20367893216059	203678932A1456B2635534			B263553416059203678932	16059A1456B2635534	MexicoM203678932	MexicoM203678932
31	2273079	Mexico	USBP	M	#####	#####	1297511400	1.85E+08	Antolin	Martinez Martine	20367893215132	203678932A5345M635256352	129751140015132	15132184751874	M63525635215132203678932	15132A5244M6352362	MexicoM203678932	MexicoM203678932
32	18337412	Mexico	USBP	M	#####	#####	1297511400	1.85E+08	Antolin	Martinez Martine	20367893215132	203678932A5345M635256352	129751140015132	15132184751874	M63525635215132203678932	15132A5244M6352362	MexicoM203678932	MexicoM203678932
33	18525130	Mexico	OFO	M	#####	#####			Apolinario	Basurto Montiel	20367893216059	203678932A1456B2635534			B263553416059203678932	16059A1456B2635534	MexicoM203678932	MexicoM203678932

# Data Matching Overview- Coordination of Business Rules (Linking)

If a person qualifies for matching by multiple rules and the overlap of matching events, OHSS staff can link every overlapping event to a single person based on the following rules. The Person\_New label will be updated and relabeled "Person\_ID", consolidating the matched events with one (1) unique Person.

#	Business Rule	Description
1	Linking Rule 1	LAST_NAME and BIRTH_DT
2	Linking Rule 2	EID_CIV_ID
3	Linking Rule 3	ANUM, LAST_NAME and COUNTRY
4	Linking Rule 4	IDENT_FINS

# Data Matching Overview- Example 2

IDENT_FINS	eid_civ_id	first_name	last_name	Rule11_N	Rule12_N	Rule16_N	Rule17_N	Rule20_N	Person_ID	person_new
		Herzl	Gad Ramon	11418709-8127	11418709H62423R55			R55-812711418709	R55-812711418709	R55-812711418709
		Herzl	Gad Ramon	11418709-8127	11418709H62423R55			R55-812711418709	R55-812711418709	R55-812711418709
1006697448	163828299	Herzl	G Ramon							R55-812711418709
1147499946	162941999	Wilvens	Joseph							P418773205670462
		Gusman	Philippe	2056704628773	205670462G255P41			P418773205670462	P418773205670462	P418773205670462
		Gusman	Philippe	2056704628773	205670462G255P41			P418773205670462	P418773205670462	P418773205670462
		Gusman	Philippe	2056704628773	205670462G255P41			P418773205670462	P418773205670462	P418773205670462
		Gusman	Philippe	2056704628773	205670462G255P41			P418773205670462	P418773205670462	P418773205670462
		Gusman	Philippe	2058704628773	205870462G255P41			P418773205670462	P418773205670462	P418773205670462
		Gusman	Philippe	2058704628773	205870462G255P41			P418773205670462	P418773205670462	P418773205670462
1147499946	162941999	Gusman	Philippe	2056704628773	205670462G255P41	11474999468773	8773162941999	P418773205670462	P418773205670462	P418773205670462
1147499946	162941999	Gusman	Philippe	2056704628773	205670462G255P41	11474999468773	8773162941999	P418773205670462	P418773205670462	P418773205670462
1147499946	162941999	Gusman	Philippe	2056704628773	205670462G255P41	11474999468773	8773162941999	P418773205670462	P418773205670462	P418773205670462
		Gusman	Phillipe	2056704628773	205670462G255P41			P418773205670462	P418773205670462	P418773205670462
		Gusman	Phillipe	2056704628773	205670462G255P41			P418773205670462	P418773205670462	P418773205670462
1264743120	184496535	Said Aleja	Rosales Mo							R2425534114931213241157
1264743120	184496535	Said	Rosales Mo	21324115714931	213241157S3R24255341	126474312014931	14931184496535	R2425534114931213241157	R2425534114931213241157	R2425534114931213241157
1264743120	184496535	Said	Rosales Mo	21324115714931	213241157S3R24255341	126474312014931	14931184496535	R2425534114931213241157	R2425534114931213241157	R2425534114931213241157
1264743120	184496535	Said	Rosales Mo	21324115714931	213241157S3R24255341	126474312014931	14931184496535	R2425534114931213241157	R2425534114931213241157	R2425534114931213241157
1264743120	184496535	Said	Rosales Mo	21324115714931	213241157S3R24255341	126474312014931	14931184496535	R2425534114931213241157	R2425534114931213241157	R2425534114931213241157



# Data Matching Overview- Testing and Validation

Once data has run through the 7 business rules, 3 modes of validation are initiated.

#	Description	Description
1	Matching Model Validation Process	Validate that matching model is creating person id correctly (ensures each matched record is assigned a person ID)
2	Review of Matching/Linking Model	Verify person id based on rule values (ensures proper linking based on identifiers)
3	Confusion Matrix Manual Review	Confusion matrix to confirm accuracy of the model (ensures matching output is correct via human intellect)



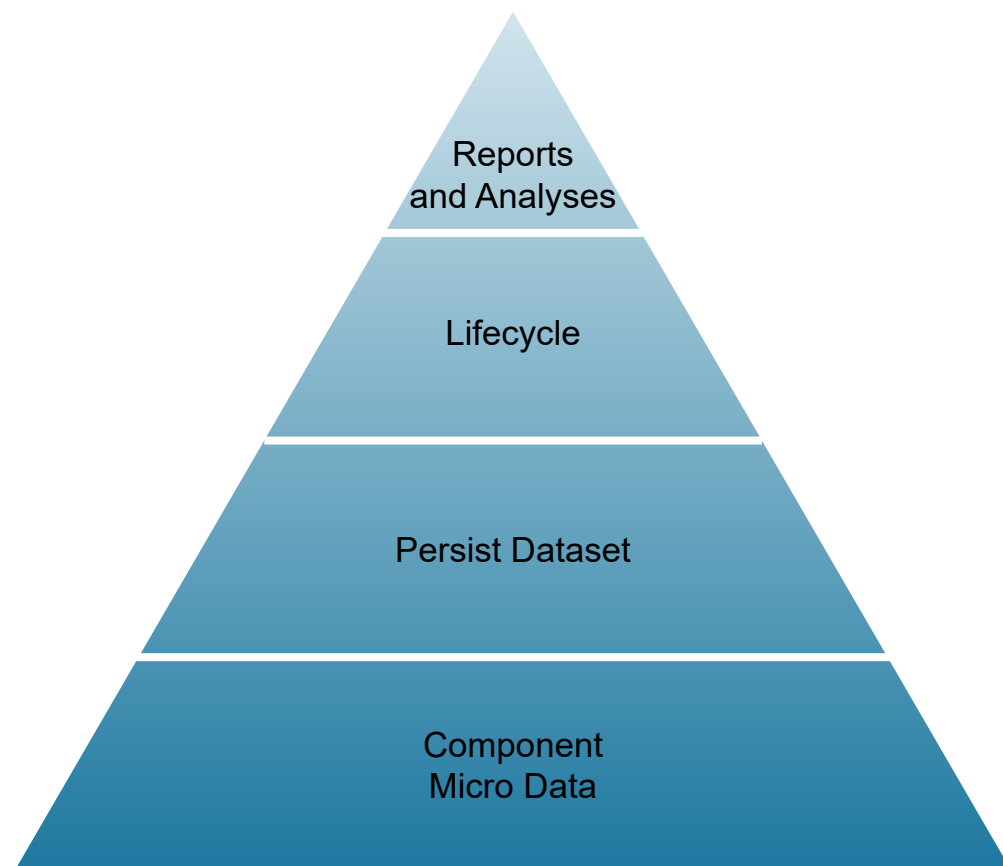
# Enforcement Lifecycle Introduction

**Purpose.** The OHSS Lifecycle Analysis **tracks cohorts of individuals from initial to final or most-current outcome.** The Lifecycle determines the most final event associated with each enforcement case as of a given cutoff date.

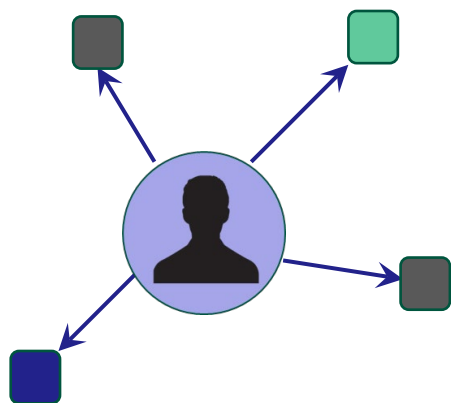
- *Ex. For all FY 2014 SW border apprehensions, what were case statuses as of FY2024 3<sup>rd</sup> quarter?*

**Foundation.** The OHSS Lifecycle analysis is built on the **OHSS Persist Dataset.**

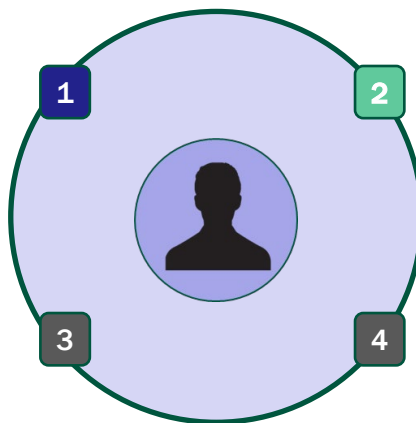
**Applications.** Enforcement lifecycle is just one of many “applications” OHSS expects to run off the Flow.



# OHSS creates Enforcement Lifecycle dataset by matching initial events to final or most-current outcomes



OHSS uses the Persist dataset to **connect all records (i.e., initial enforcement actions and reportable events) associated with a person** who touches different stages of the immigration enforcement system.



Each person's actions and events are arranged chronologically.

The unit of analysis is the "event cycle," defined as the set of reportable events associated with each initial enforcement action.



Event cycles may be resolved in one of three ways, in the following order of priority:

1. Final enforcement action (removal, return, permanent relief, re-entry)
2. Most current enforcement action (all other enforcement outcomes)
3. No updated status

# Event Cycles Example

Person ID	Event Cycle ID	Date	Event	Reportable Event	Initial Action	Final Action
1229	1	6/5/2014	USBP Apprehension	USBP Apprehension	1	.
1229	1	6/8/2014	Applied for Affirmative Asylum	Asylum Application	.	.
1229	1	7/8/2014	EOIR Hearing	EOIR Hearing	.	.
1229	1	8/16/2014	Affirmative Asylum Application Final Decision	Asylum Denied	.	.
1229	1	9/12/2014	Removed	ICE Final Order Removal	.	1
1230	1	12/1/2014	OFO Inadmissibility	OFO Inadmissibility	1	.
1230	1	1/20/2015	Booked Into Detention	Bookin	.	.
1230	1	2/3/2015	Booked Out of Detention	Bookout	.	.
1230	1	2/5/2015	Removed	CBP Reinstatement	.	1
1230	2	1/4/2016	ERO Admin Arrest	ERO Arrest	1	.
1230	2	1/6/2016	EOIR Hearing	EOIR Hearing	.	.

The unit of measurement for the Lifecycle is one **Event Cycle** through the system until it ends in either a repatriation, relief from removal, or re-apprehension.



# Event Cycles Example

**Event Cycle ID** is assigned whenever a new initial action appears and corresponds with one **Event Cycle**.

The unit of measurement for the Lifecycle is one **Event Cycle** through the system until it ends in either a repatriation, relief from removal, or re-apprehension.

Person ID	Event Cycle ID	Date	Event	Reportable Event	Initial Action	Final Action
1229	1	6/5/2014	USBP Apprehension	USBP Apprehension	1	.
1229	1	6/8/2014	Applied for Affirmative Asylum	Asylum Application	.	.
1229	1	7/8/2014	EOIR Hearing	EOIR Hearing	.	.
1229	1	8/16/2014	Affirmative Asylum Application Final Decision	Asylum Denied	.	.
1229	1	9/12/2014	Removed	ICE Final Order Removal	.	1
1230	1	12/1/2014	OFO Inadmissibility	OFO Inadmissibility	1	.
1230	1	1/20/2015	Booked Into Detention	Bookin	.	.
1230	1	2/3/2015	Booked Out of Detention	Bookout	.	.
1230	1	2/5/2015	Removed	CBP Reinstatement	.	1
1230	2	1/4/2016	ERO Admin Arrest	ERO Arrest	1	.
1230	2	1/6/2016	EOIR Hearing	EOIR Hearing	.	.

# Event Cycles Example

Event Cycle ID is assigned whenever a new initial action appears and corresponds with one **Event Cycle**.

**Person ID** is assigned to each individual in the dataset. They can have multiple **Event Cycle ID's** depending on how many **Event Cycles** they have completed

The unit of measurement for the Lifecycle is one **Event Cycle** through the system until it ends in either a repatriation, relief from removal, or re-apprehension.

Person ID	Event Cycle ID	Date	Event	Reportable Event	Initial Action	Final Action
1229	1	6/5/2014	USBP Apprehension	USBP Apprehension	1	.
1229	1	6/8/2014	Applied for Affirmative Asylum	Asylum Application	.	.
1229	1	7/8/2014	EOIR Hearing	EOIR Hearing	.	.
1229	1	8/16/2014	Affirmative Asylum Application Final Decision	Asylum Denied	.	.
1229	1	9/12/2014	Removed	ICE Final Order Removal	.	1
1230	1	12/1/2014	OFO Inadmissibility	OFO Inadmissibility	1	.
1230	1	1/20/2015	Booked Into Detention	Bookin	.	.
1230	1	2/3/2015	Booked Out of Detention	Bookout	.	.
1230	1	2/5/2015	Removed	CBP Reinstatement	.	1
1230	2	1/4/2016	ERO Admin Arrest	ERO Arrest	1	.
1230	2	1/6/2016	EOIR Hearing	EOIR Hearing	.	.

# Event Cycles Example

Event Cycle ID is assigned whenever a new initial action appears and corresponds with one Event Cycle.

Person ID is assigned to each individual in the dataset. They can have multiple Event Cycle ID's depending on how many Event Cycles they have completed

The unit of measurement for the Lifecycle is one Event Cycle through the system until it ends in either a repatriation, relief from removal, or re-apprehension.

- Event Cycle 1: Complete
- Event Cycle 2: Complete
- Event Cycle 3: Incomplete

Person ID	Event Cycle ID	Date	Event	Reportable Event	Initial Action	Final Action
1229	1	6/5/2014	USBP Apprehension	USBP Apprehension	1	.
1229	1	6/8/2014	Applied for Affirmative Asylum	Asylum Application	.	.
1229	1	7/8/2014	EOIR Hearing	EOIR Hearing	.	.
1229	1	8/16/2014	Affirmative Asylum Application Final Decision	Asylum Denied	.	.
1229	1	9/12/2014	Removed	ICE Final Order Removal	.	1
1230	1	12/1/2014	OFO Inadmissibility	OFO Inadmissibility	1	.
1230	1	1/20/2015	Booked Into Detention	Bookin	.	.
1230	1	2/3/2015	Booked Out of Detention	Bookout	.	.
1230	1	2/5/2015	Removed	CBP Reinstatement	.	1
1230	2	1/4/2016	ERO Admin Arrest	ERO Arrest	1	.
1230	2	1/6/2016	EOIR Hearing	EOIR Hearing	.	.

# Reportable Events and Outcomes

Y:\Analytica\Navy\MasterTable\ICO\Code Tables

- Of possible 3,064 **Source Events**, each Source Event is grouped to one of 129 **Reportable Events**

- Each **Reportable Event** is grouped to one of 47 **Sub Outcomes**
- Each Sub Outcome is grouped to one of 9 **Lifecycle Outcomes**

- Each **Outcome** is grouped to one of 2 **Statuses**:  
Repatriated and No Confirmed Departure

# USBP Source Data → USBP Reportable Events

event	source	dataset	type1	type2	type1_var	type2_var	type1_desc	detailed_outcome
USBP Apprehension	USBP	USBP Apprehensions	ADMDPT		Disposition		Administrative Deportation	USBP Apprehension
USBP Apprehension	USBP	USBP Apprehensions	ADMIT		Disposition		Admitted	USBP PD
USBP Apprehension	USBP	USBP Apprehensions	ER	N	Disposition	Contiguous_country	Expedited Removal	USBP Apprehension
USBP Apprehension	USBP	USBP Apprehensions	P		Disposition		Paroled	USBP Parole
USBP Apprehension	USBP	USBP Apprehensions	PD		Disposition		Prosecutorial Discretion	USBP PD
USBP Apprehension	USBP	USBP Apprehensions	B	Y	Disposition	Contiguous_country	Bag and Baggage	USBP Repatriation2
USBP Apprehension	USBP	USBP Apprehensions	ER	Y	Disposition	Contiguous_country	Expedited Removal	USBP Repatriation2
USBP Apprehension	USBP	USBP Apprehensions	I	Y	Disposition	Contiguous_country	I-210	USBP Repatriation1
USBP Apprehension	USBP	USBP Apprehensions	REINST	Y	Disposition	Contiguous_country	Reinstatement	USBP Repatriation2
USBP Apprehension	USBP	USBP Apprehensions	V	Y	Disposition	Contiguous_country	Voluntary Return	USBP Repatriation1
NTA Served	USBP	USBP Apprehensions	NTA		Disposition		Notice-to-Appear Released	CBP NTA
NTA Served	USBP	USBP Apprehensions	NTA/DT		Disposition		Notice To Appear Detained	CBP NTA
NTA Served	USBP	USBP Apprehensions	WA/NTA		Disposition		Notice To Appear Warrant of Arrest	CBP NTA
USBP Apprehension	USBP	USBP Apprehensions	WD/T42	Y	Disposition	Contiguous_country	Title 42 Expulsion	CBP T42 Expulsions
USBP Apprehension	USBP	USBP Apprehensions	WD/T42	N	Disposition	Contiguous_country	Title 42 Expulsion	CBP T42 Expulsions
USBP Apprehension	USBP	USBP Apprehensions	NAR	Y	Disposition	Contiguous_country	Not Amenable to Removal	USBP Not Amenable to Removal
USBP Apprehension	USBP	USBP Apprehensions	ER/CFF	N	Disposition	Contiguous_country		USBP Apprehension
USBP Apprehension	USBP	USBP Apprehensions	PD	N	Disposition	Contiguous_country		USBP Apprehension

# USBP Reportable Events -> Lifecycle Outcomes

<b>detailed_outcome</b>	<b>suboutcome</b>	<b>outcome</b>	<b>status</b>
USBP Apprehension	No Subsequent Event	Being Processed By DHS	Still in US
USBP Apprehension - Other	No Subsequent Event	Being Processed By DHS	Still in US
USBP Not Amenable to Removal	Not Amenable to Removal	Non-Removable	Still in US
USBP Parole	Parole	Parole	Still in US
USBP PD	DHS PD	Relief	Still in US
USBP Repatriation1	Return	Returned	Repatriated
USBP Repatriation2	Removal	Removed	Repatriated

# Enforcement Lifecycle Standard Tables

Final or Most Current Outcomes, Total SW Border Encounters by Family Status

MOST RECENT OUTCOMES	TOTAL													
	2013	2014	2015	2016	2017	2018	2019	10/1/2019- 3/19/2020	3/20/2020- 9/30/2020	2021	2022	10/1/2022- 5/11/2023	5/12/2023- 9/30/2023	10/1/2023- 3/31/2024
<b>Total Encounters<sup>1</sup></b>	<b>477,459</b>	<b>544,667</b>	<b>403,473</b>	<b>505,086</b>	<b>385,192</b>	<b>497,699</b>	<b>957,155</b>	<b>219,578</b>	<b>229,153</b>	<b>1,725,239</b>	<b>2,339,010</b>	<b>1,456,859</b>	<b>731,737</b>	<b>1,078,483</b>
<b>Repatriations</b>	391,120	380,099	291,423	304,423	221,573	265,343	323,320	148,721	219,632	1,135,880	1,193,161	649,359	198,323	231,717
Title 42 Expulsion	0	0	0	0	0	0	0	0	204,463	1,061,969	1,077,309	562,990	0	0
<b>Removals</b>	316,517	308,469	249,538	263,449	185,013	228,961	256,162	120,212	8,354	34,872	62,241	44,720	76,226	112,178
Expedited	188,291	178,482	141,982	145,209	101,530	127,707	141,608	67,516	2,903	16,198	35,047	27,924	52,128	81,754
Reinstatement	119,814	118,655	98,397	108,514	76,239	92,662	99,087	49,411	4,746	14,747	20,377	13,491	21,420	28,926
Administrative removals	889	1,175	981	842	696	719	1,114	402	150	307	357	222	85	267
Other removals <sup>2</sup>	7,523	10,157	8,178	8,884	6,548	7,873	14,353	2,883	555	3,620	6,460	3,083	2,593	1,231
<b>Returns</b>	66,718	62,178	35,251	33,192	31,203	29,076	33,558	14,205	3,571	26,008	38,716	35,864	113,346	114,696
Re-encounters <sup>3</sup>	7,885	9,452	6,634	7,782	5,357	7,306	33,600	14,304	3,244	13,031	14,895	5,785	8,751	4,843
<b>No confirmed departure</b>	86,338	164,568	112,050	200,663	163,619	232,356	633,835	70,857	9,521	589,359	1,145,849	807,500	533,414	846,766
Being processed	19,360	39,922	29,049	58,152	51,895	84,992	301,722	37,529	5,886	415,892	859,010	638,319	501,516	824,452
Being processed by DHS	9,597	15,402	7,880	16,336	17,089	28,596	132,048	16,200	3,145	226,365	500,710	318,696	155,089	252,539
In EOIR proceedings <sup>4</sup>	991	3,096	2,696	9,869	12,640	27,000	109,605	11,588	970	126,501	247,295	247,988	304,859	544,358
EOIR case completed - additional DOJ action <sup>5</sup>	8,772	21,424	18,473	31,947	22,166	29,396	60,069	9,741	1,771	63,026	111,005	71,635	41,568	27,555
Final order/voluntary departure	19,085	46,999	30,700	52,851	42,211	64,283	160,536	12,404	751	71,933	83,046	34,818	19,956	16,025
Unexecuted removal orders	18,281	45,045	29,201	50,842	41,114	62,902	158,291	12,327	746	70,550	82,099	34,473	19,802	15,920
In absentia	13,684	34,832	20,893	34,976	30,674	49,336	129,200	9,454	352	55,567	65,752	28,740	14,762	4,298
Not in absentia	4,597	10,213	8,308	15,866	10,440	13,566	29,091	2,873	394	14,983	16,347	5,733	5,040	11,622
Unexecuted voluntary departures	804	1,954	1,499	2,009	1,097	1,381	2,245	77	5	1,383	947	345	154	105
Relief	21,582	28,579	23,067	40,927	30,108	33,494	55,169	8,445	1,320	56,090	99,609	45,070	6,890	247
SIJ or affirmative asylum	1,734	9,004	6,706	17,615	14,674	16,813	30,953	4,004	567	24,884	16,121	3,803	502	39
LPR status granted by DHS	11,961	3,711	2,342	2,917	1,958	1,848	3,749	452	101	1,761	40,822	22,758	57	59
EOIR relief <sup>6</sup>	6,511	14,175	13,066	18,517	11,709	14,069	17,376	2,393	335	11,362	12,737	3,432	495	108
Relief on merits <sup>7</sup>	6,140	13,380	12,437	17,570	11,139	13,429	16,647	2,261	323	11,149	12,486	3,315	432	91
Relief not on Merits <sup>8</sup>	371	795	629	947	570	640	729	132	12	213	251	117	63	17
Other <sup>9</sup>	1,376	1,689	953	1,878	1,767	764	3,091	1,596	317	18,083	29,929	15,077	5,836	41
EOIR Termination	24,064	44,907	27,986	46,638	37,495	45,744	110,570	12,250	1,514	40,296	51,623	14,371	2,773	1,046
MPP	0	0	0	0	0	0	8,246	1,903	345	482	594	0	0	0
Non-MPP	24,064	44,907	27,986	46,638	37,495	45,744	102,324	10,347	1,169	39,814	51,029	14,371	2,773	1,046
<b>No Subsequent Event<sup>10</sup></b>	<b>2,247</b>	<b>4,161</b>	<b>1,248</b>	<b>2,095</b>	<b>1,910</b>	<b>3,843</b>	<b>5,838</b>	<b>229</b>	<b>50</b>	<b>5,148</b>	<b>52,561</b>	<b>74,922</b>	<b>2,279</b>	<b>4,996</b>

## Enforcement Lifecycle Standard Tables

- As of December 31, 2022,
  - - 60 percent of all Southwest Border enforcement encounters from 2013 to 2021 resulted in expulsions or repatriations
  - - 28 percent were still being processed pursuant to the immigration enforcement provisions in Title 8 of the U.S. Code
  - - 6 percent had resulted in unexecuted removal orders or grants of voluntary departure
  - - 5 percent had been granted relief or other protection from removal
- Outcomes vary substantially by citizenship and family status.
  - Mexican nationals are much more likely to have been expelled or repatriated (93 percent) than citizens of the Northern Central American countries of El Salvador, Guatemala, or Honduras (40 percent) or other countries (24 percent)
  - Single adults (SAs) were also much more likely to be expelled or repatriated (85 percent of encounters) than individuals in family units (FMs) (15 percent)



# Dissemination plans

- **Develop an anonymized public facing version**
  - **Data Disclosure Avoidance practice**
- **Federal Statistical Research Data Center**

**Find reports and information at [ohss.dhs.gov](https://ohss.dhs.gov)**  
**Contact us at [ohss@dhs.gov](mailto:ohss@dhs.gov)**



**Thank You!**